

# Understanding MGD

Many commonly attribute their eye discomfort to dry eye, when the root cause of the burning, scratching and redness is most likely MGD.

MGD occurs when there is compromise to the function and/or structure of the meibomian glands in the eyelids that produce the protective oily layer of the tear film. This oil helps protect the ocular surface from disease and prevents the watery part of the tears from evaporating when your eyes are open. Without these oils, our eyes become more susceptible to the negative effects that dry climates, air conditioning, computer use, reading and other daily activities can have on the long-term health of our eyes.



**PROTECTIVE WATER LAYER**  
Produced by the Lacrimal Gland



**WATER IS PROTECTED BY OIL**  
Produced by the Meibomian Glands  
Located in the Eyelids



**WATER EVAPORATING**  
Causing: Redness, Dryness, Irritation,  
Burning and Eye Fatigue

## MGD Identification

To assess meibomian gland health and to identify MGD, both meibomian gland function and structure are evaluated.

### Gland Function

Function is evaluated by assessing how the glands respond to gentle force, approximating that of a deliberate blink. The blink health, which is crucial to maintaining gland function, is assessed by determining the completeness of each blink. Reduced gland function is correlated with symptoms of eye discomfort and eye redness.



**NORMAL FUNCTIONING GLANDS**  
Liquid Oil



**BLOCKED GLANDS**  
No Oil Secretions

### Gland Structure

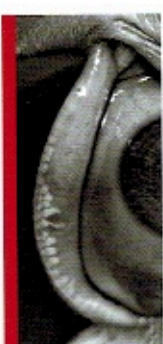
Structure is observed and captured with high definition gland imaging. Structural compromise, which is otherwise invisible, can be identified and documented with gland imaging. Structural compromise is unlikely to be reversible. Failure to treat obstructed glands is likely to lead to further structural compromise.



**NORMAL GLAND STRUCTURE**



**SHORTENED GLANDS AND GLAND LOSS**



**SIGNIFICANT GLAND LOSS**

## Treating MGD with LipiFlow®

While there are multiple choices available for treating MGD, LipiFlow is the only FDA-cleared device for removing gland blockages and restoring gland function. Through advances in the application of Vectored Thermal Pulsation (VTP™) technology, the LipiFlow treatment utilizes a patented algorithm of heat applied to the inner eyelids and massage to remove the obstructions in your meibomian glands.

